

CARY MAGAZINE

CARY • APEX • MORRISVILLE

Wrap it Up!

A VISIT TO
PRESS COFFEE
+ CREPES



Jane Wolfgang

APEX'S ARTIST
SAYS FAREWELL

Scenes of Serenity

Create a calm environment
outside and in

Plus

THE GREEN CHAIR PROJECT

Crush the Blues!

WRITTEN BY **AMBER KEISTER**
DESIGNED BY **LAUREN EARLEY**

WHO KNEW WHEN Classic Blue was picked as the Color of the Year, that in 2020, we could all use more stability and peace — even if it came in throw-pillow form?

People are spending more time at home than ever, and they are looking to create spaces that are as relaxing and comfortable as possible. And blue furnishings can help set that mood, says Vicky Serany, owner of Southern Studio Interior Design.

“If you look at color theory, blue represents calm; it represents a tranquil environment,” she said. “So in people’s homes, people want to create a haven for themselves.”

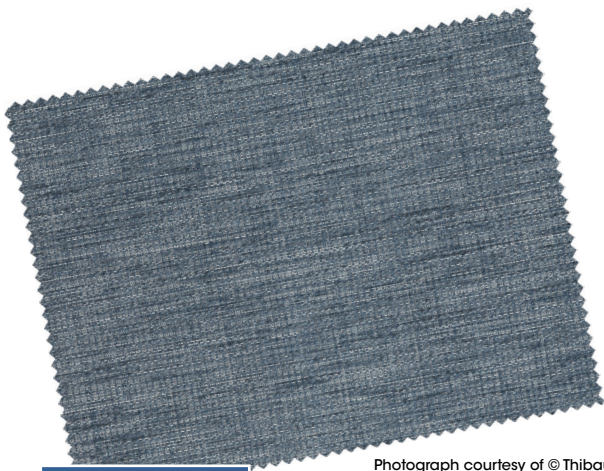
Lauren Burns, owner of Lauren Burns Interiors, appreciates the color’s versatility. Because it seems comfortable and familiar, the color softens modern furnishings. Wallpaper in a bold blue geometric print or metal-wrapped chairs upholstered in rich, azure velvet seem timeless, not trendy.

“It’s kind of a universal color, but it creates the sense of peace and harmony,” she said. “I just think there’s something very comforting with this color.”

laurenburnsinteriors.com
southernstudio.com

“When you layer all different kinds of values and intensities of blues, it adds depth to the space and to your design.”

— Vicky Serany



Photograph courtesy of © Thibaut Inc.

Fabric used to line the back of shelving

Thibaut Artessa Weave, Navy



Santa Monica Indigo Throw, \$168, annieselke.com

Owen Denim Throw, \$90, annieselke.com



Cobalt Chatterly Flame Cocktail Tray, \$202, annieselke.com



Window Treatment: Richmond in Denim, Clarke & Clarke, available at kravet.com

DESIGN BY SOUTHERN STUDIO



Labyrinth Linen Blue Decorative Pillow, \$100, annieselke.com

Veronica Pillow, \$145, company.com



Kenmore, Decorative Box worlds-away.com

Mellie LG BL, Decorative Box worlds-away.com





Catherine Nguyen Photography



Catherine Nguyen Photography

“It feels like people are always drawn to blue, whether it’s classic blue or different shades of blue.”

— Lauren Burns



Catherine Nguyen Photography



Catherine Nguyen Photography

DESIGN BY
LAUREN BURNS INTERIORS



Catherine Nguyen Photography